

AT&T Port-LockLine Category 6A Unshielded 100 Ohm RJ45 Port-Locking Modular Cords

Description

Unshielded RJ45/RJ45 modular cords with port-locking mechanism:

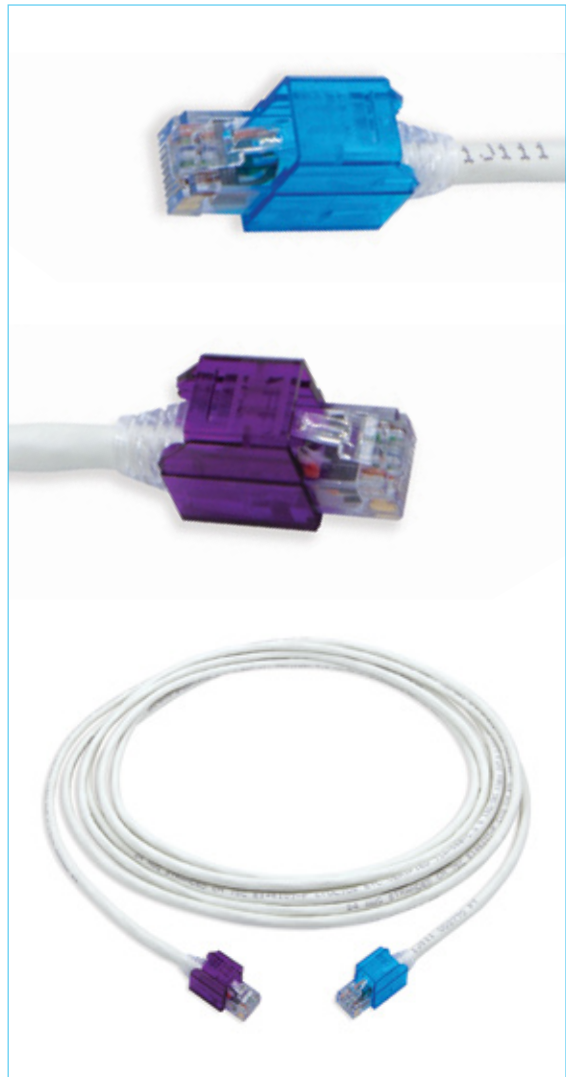
Frequency range	1-500 MHz
Conductor	26 AWG 7x0.16 mm stranded bare copper
Insulation	PO
Color code	ANSI/TIA-568.2-D
Jacket	LS0H
Jacket color	Gray
Boot color	Transparent

Standard & EU Directives Conformance

- Category 6A modular cords according to ISO/IEC 11801
- Category 6A modular cords according to EN 50173
- Category 6A modular cords according to ANSI/TIA-568.2-D
- IEC 60332-1 (cable) and UL94 V-0 (plug) flame tests
- EU Directive 2011/65/EU (RoHS-2)

Mechanical Properties

Impedance	100 Ohm nom.
Pin-pair assignment	T568B
Plug contacts	50µ-Inch Gold plating
Plug housing	FR Polycarbonate
Operating temperature	-20 to +60C
Voltage rating	75 Vdc max.
Ampacity	1.0 Ampere max.
Insulation resistance	500 MegaOhm min. @500 Vdc



Ordering Information

Description	Key Color	Length m	Jacket Color	Boot Color	Packaging	P/N
4-Pair 26 AWG RJ45/RJ45 Unshielded CAT6A LS0H Port-LockLine Cord	Black	0.5	Gray	Transparent	1/Bag	14M6AHA005P-BK61
4-Pair 26 AWG RJ45/RJ45 Unshielded CAT6A LS0H Port-LockLine Cord	Black	1.0	Gray	Transparent	1/Bag	14M6AHA010P-BK61
4-Pair 26 AWG RJ45/RJ45 Unshielded CAT6A LS0H Port-LockLine Cord	Black	2.0	Gray	Transparent	1/Bag	14M6AHA020P-BK61
4-Pair 26 AWG RJ45/RJ45 Unshielded CAT6A LS0H Port-LockLine Cord	Black	3.0	Gray	Transparent	1/Bag	14M6AHA030P-BK61
4-Pair 26 AWG RJ45/RJ45 Unshielded CAT6A LS0H Port-LockLine Cord	Black	5.0	Gray	Transparent	1/Bag	14M6AHA050P-BK61
4-Pair 26 AWG RJ45/RJ45 Unshielded CAT6A LS0H Port-LockLine Cord	Black	10	Gray	Transparent	1/Bag	14M6AHA100P-BK61

Continued on page F.2.1a