

AT&T CenterLine Category 5e Plug & Play Unshielded RJ21 (Telco) to RJ45 Plug & Play Patch Panels

Description

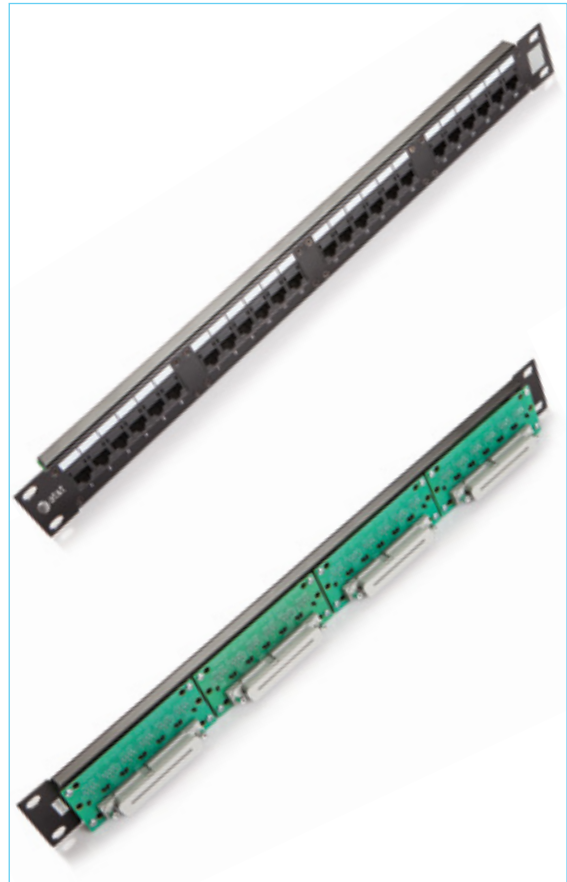
24 or 48 port unshielded panels (used with RJ21/RJ21 25-Pair cords)	
Frequency range	1-100 MHz
Panel front	4 or 8 modules of 6 RJ45 jacks
Panel back	4 or 8 RJ21 (Telco) sockets
Color	Black
Shield	None
Housing	High impact FR compound
Frame	Galvanized steel

Standard & EU Directives Conformance

- Category 5e connecting hardware acc. to ANSI/TIA-568.2-D
- UL94 V-0 flame test
- EU Directive 2011/65/EU (RoHS-2)

Mechanical & Electrical Properties

Port contacts	50μ-Inch gold plating
Insertion/Extraction durability	750 cycles
Operating temperature	-20 to +60C at 5-95% RH (non condensing)
Contact resistance	20 mOhm max.
DC resistance	0.2 Ohm max.
Voltage rating	72 Vdc max.
Insulation resistance	10 MegaOhm min. @500 Vdc



Ordering Information

Description	Color	Modules	Units	Size mm	Packaging	P/N
24 port RJ21/RJ45 Unshielded CAT5e 19" Patch Panel	Black	4	1U	44.4x483	1/Box	13U5ENV024A-BK1U
48 port RJ21/RJ45 Unshielded CAT5e 19" Patch Panel	Black	8	2U	89.0x483	1/Box	13U5ENV048A-BK2U