

## AT&T FiberLine

### Fiber Optic LC/UPC Duplex Multimode Zip-Cords

#### Description

This page shows some of the available combinations of AT&T fiber-optic Duplex Multimode Zip-Cords made with multimode fibers and terminated with LC/UPC connectors.

Additional combinations can be selected using the information on page B.3.

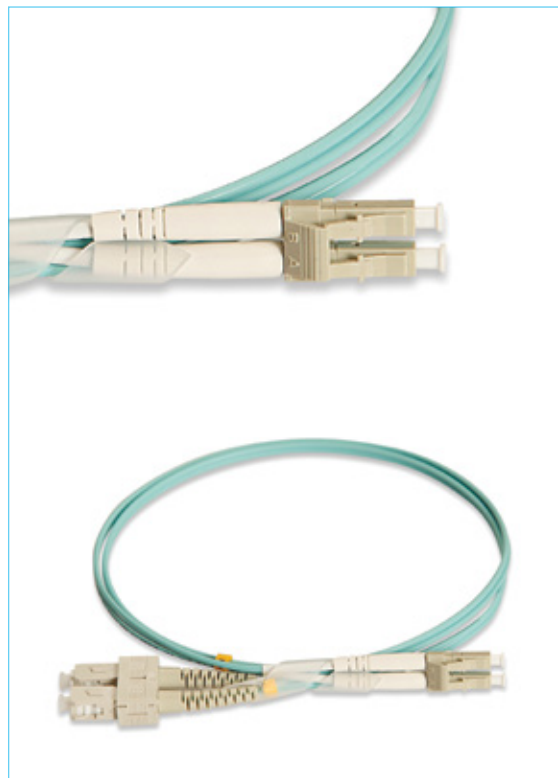
Fiber type	Select a multimode fiber from page B.6.
Buffer type	900 $\mu$ tight flame retardant LSOH coating
Strength elements	Served aramid and glass yarn
Minicable jacket material	Flame retardant LSOH compound

#### Standard & EU Directives Conformance

- Relevant sections of ANSI/TIA-568.3-D
- Relevant sections of ISO/IEC 11801
- Relevant sections of EN 50173
- Relevant sections of ANSI/TIA/EIA-604 (FOCIS)
- Relevant sections of IEC 60874
- Relevant sections of IEC 61753
- Relevant sections of IEC 61754
- IEC 60332-1 flame test
- IEC 60754 & IEC 61034
- EU Directive 2011/65/EU (RoHS-2)

#### Mechanical Properties

Short term bend radius	20xOD mm
Long term bend radius	10xOD mm
Operating temperature	-20 to +60C
Default jacket colors	MM OM1 & OM2: Orange MM OM3: Turquoise MM OM4: Purple



#### Ordering Information

**FF:** Fiber Type    **CC:** Jacket Color

Description	Length m	Cable OD mm	Packaging	P/N
LC/UPC-LC/UPC Duplex Multimode Zip-Cord LSOH	1	2.0x4.0	1/Bag - 12/Box	28DFFPP010T-CC61
LC/UPC-LC/UPC Duplex Multimode Zip-Cord LSOH	2	2.0x4.0	1/Bag - 12/Box	28DFFPP020T-CC61
LC/UPC-LC/UPC Duplex Multimode Zip-Cord LSOH	3	2.0x4.0	1/Bag - 12/Box	28DFFPP030T-CC61
LC/UPC-LC/UPC Duplex Multimode Zip-Cord LSOH	5	2.0x4.0	1/Bag - 12/Box	28DFFPP050T-CC61
LC/UPC-LC/UPC Duplex Multimode Zip-Cord LSOH	10	2.0x4.0	1/Bag - 12/Box	28DFFPP100T-CC61
LC/UPC-ST/UPC Duplex Multimode Zip-Cord LSOH	1	2.0x4.0	1/Bag - 12/Box	28DFFPA010T-CC61
LC/UPC-ST/UPC Duplex Multimode Zip-Cord LSOH	2	2.0x4.0	1/Bag - 12/Box	28DFFPA020T-CC61
LC/UPC-ST/UPC Duplex Multimode Zip-Cord LSOH	3	2.0x4.0	1/Bag - 12/Box	28DFFPA030T-CC61
LC/UPC-ST/UPC Duplex Multimode Zip-Cord LSOH	5	2.0x4.0	1/Bag - 12/Box	28DFFPA050T-CC61
LC/UPC-ST/UPC Duplex Multimode Zip-Cord LSOH	10	2.0x4.0	1/Bag - 12/Box	28DFFPA100T-CC61
LC/UPC-FC/UPC Duplex Multimode Zip-Cord LSOH	1	2.0x4.0	1/Bag - 12/Box	28DFFPE010T-CC61
LC/UPC-FC/UPC Duplex Multimode Zip-Cord LSOH	2	2.0x4.0	1/Bag - 12/Box	28DFFPE020T-CC61
LC/UPC-FC/UPC Duplex Multimode Zip-Cord LSOH	3	2.0x4.0	1/Bag - 12/Box	28DFFPE030T-CC61
LC/UPC-FC/UPC Duplex Multimode Zip-Cord LSOH	5	2.0x4.0	1/Bag - 12/Box	28DFFPE050T-CC61
LC/UPC-FC/UPC Duplex Multimode Zip-Cord LSOH	10	2.0x4.0	1/Bag - 12/Box	28DFFPE100T-CC61
LC/UPC-LSH/UPC Duplex Multimode Zip-Cord LSOH	1	2.0x4.0	1/Bag - 12/Box	28DFFPD010T-CC61
LC/UPC-LSH/UPC Duplex Multimode Zip-Cord LSOH	2	2.0x4.0	1/Bag - 12/Box	28DFFPD020T-CC61
LC/UPC-LSH/UPC Duplex Multimode Zip-Cord LSOH	3	2.0x4.0	1/Bag - 12/Box	28DFFPD030T-CC61
LC/UPC-LSH/UPC Duplex Multimode Zip-Cord LSOH	5	2.0x4.0	1/Bag - 12/Box	28DFFPD050T-CC61
LC/UPC-LSH/UPC Duplex Multimode Zip-Cord LSOH	10	2.0x4.0	1/Bag - 12/Box	28DFFPD100T-CC61
LC/UPC-MTRJ Female Duplex Multimode Zip-Cord LSOH	1	1.6x3.2	1/Bag - 12/Box	28DFFPT010T-CC61
LC/UPC-MTRJ Female Duplex Multimode Zip-Cord LSOH	2	1.6x3.2	1/Bag - 12/Box	28DFFPT020T-CC61
LC/UPC-MTRJ Female Duplex Multimode Zip-Cord LSOH	3	1.6x3.2	1/Bag - 12/Box	28DFFPT030T-CC61
LC/UPC-MTRJ Female Duplex Multimode Zip-Cord LSOH	5	1.6x3.2	1/Bag - 12/Box	28DFFPT050T-CC61
LC/UPC-MTRJ Female Duplex Multimode Zip-Cord LSOH	10	1.6x3.2	1/Bag - 12/Box	28DFFPT100T-CC61

#### Optional Transmission Properties

Suffix	Connector IL (dB)	Connector RL (dB)
T = Standard Loss connector	0.30 max. 0.20 Typical	20 min.
S = Low-Loss connector	0.15 max. 0.10 Typical	20 min.
L = Super Low-Loss connector (LC Only)	0.10 max. 0.07 Typical	20 min.