

AT&T CopperLine Category 5e U/UTP 100 Ohm Horizontal Indoor LAN Cables

Description

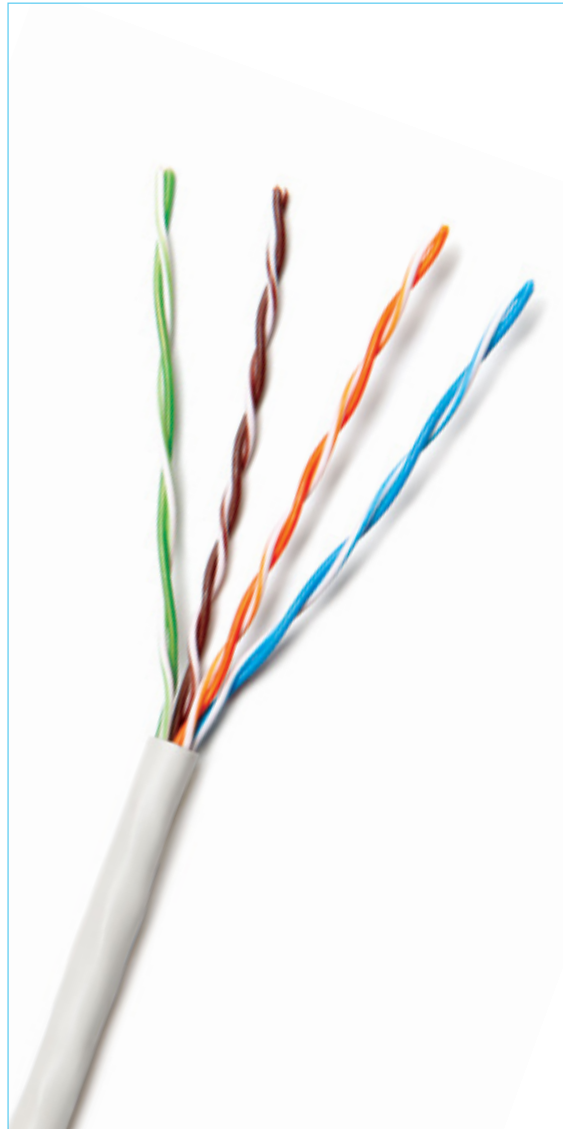
4 & 8 pair U/UTP cables	
Frequency range	1-100 MHz
Conductor	24 AWG Solid bare copper
Insulation	PO
Color code	ANSI/TIA-568.2-D
Shield	None
Jacket	PVC or LS0H

Standards, EU Directives and Regulations Conformance

- Category 5e cable according to IEC 61156-5
- Category 5e cable according to ANSI/TIA-568.2-D
- 100MHz cable according to EN 50288-3-1
- IEC 60332-1, IEC 60332-3-24 or IEC 60332-3-25 flame tests
- IEC 60754 & IEC 61034 (LS0H cables)
- EU Directive 2011/65/EU (RoHS-2)
- EU Regulation 305/2011 (CPR):
Various classifications available upon request.

Mechanical & Electrical Properties

Pulling force	50 N/mm ² max.
Short term bend radius	8xOD mm
Long term bend radius	4xOD mm
Operating temperature	-20 to +60C
Installation temperature	0 to +50C
DC resistance	93 Ohm/km max.
Capacitance	56 pF/m max. @ 1kHz
Voltage rating	72 Vdc max.
Velocity of propagation (NVP)	69% nom.



Ordering Information

Description	Color	Flame Test	OD mm	Weight kg/km	P/N
4-Pair 24 AWG U/UTP CAT5e PVC Cable	Gray RAL 9002	IEC 60332-1	4.8	30	11U5EVA004N-GYxx-yy
4-Pair 24 AWG U/UTP CAT5e LS0H Cable	Gray RAL 9002	IEC 60332-1	4.8	30	11U5EHA004N-GYxx-yy
2x(4-Pair 24 AWG U/UTP) CAT5e PVC FIG-8 Cable	Gray RAL 9002	IEC 60332-1	4.8x9.7	60	11U5EVA008F-GYxx-yy
2x(4-Pair 24 AWG U/UTP) CAT5e LS0H FIG-8 Cable	Gray RAL 9002	IEC 60332-1	4.8x9.7	60	11U5EHA008F-GYxx-yy

Packaging options (xx): 1J: 305m Reelex II™. 3J: Reel-In-Box. 2K: 500m Drums. 2L: 1000m Drums. Additional options available upon request. CPR class options (yy): B1: B2ca. C1: Cca. D1: Dca. E1: Eca. F1: Fca. Sub class information detailed in technical specifications.