

AT&T CopperLine Category 3

Unshielded RJ45 Patch Panels

Description

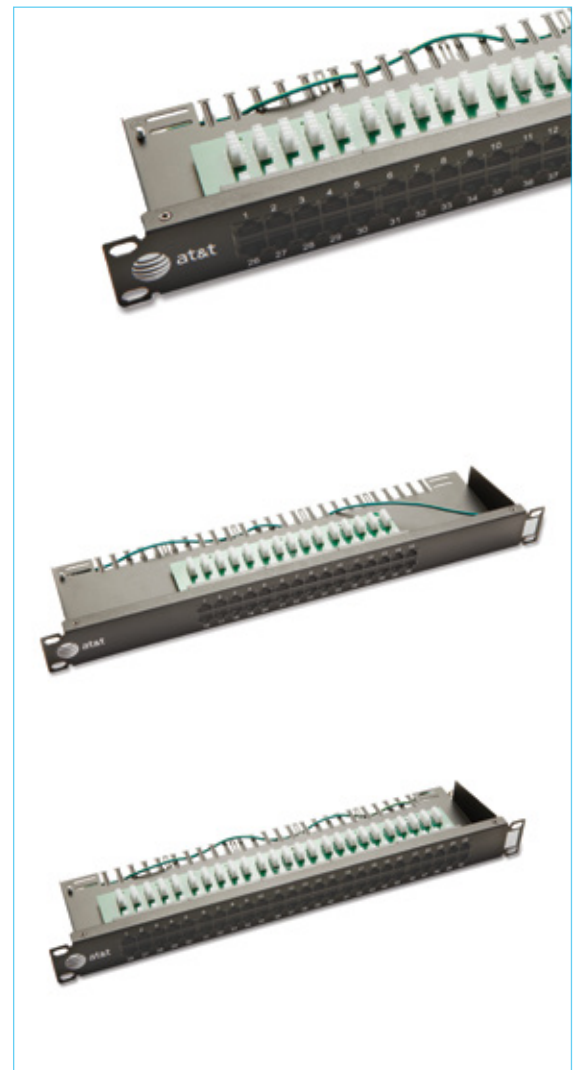
30 or 50 port unshielded panels	
Frequency range	1-16 MHz
Compatible conductors	23-26 AWG Solid or stranded
Wiring	2 pairs per port: 3-6 & 4-5
Blocks	IDC 110 or LSA-Plus
Shield	None
Housing	High impact FR compound
Frame	Galvanized steel

Standard & EU Directives Conformance

- Category 3 connecting hardware acc. to ANSI/TIA-568.2-D
- UL94 V-0 flame test
- EU Directive 2011/65/EU (RoHS-2)

Mechanical & Electrical Properties

Construction	5 modules of fixed 6-ports or 10-ports PCB units.
Port contacts	50µ-Inch gold plating
Insertion/Extraction durability	750 cycles Level A durability
Cable re-termination	20 terminations
Operating temperature	-20 to +60C at 5-95% RH (non condensing)
Contact resistance	20 mOhm max.
DC resistance	0.2 Ohm max.
Voltage rating	75 Vdc max.
Insulation resistance	10 MegaOhm min. @500 Vdc



Ordering Information

Description	Color	Blocks	Units	Size mm	Packaging	P/N
30 Port RJ45 Unshielded CAT3 19" Patch Panel	Black	110 IDC	1U	44.4x483	1/Box	13U03NV030A-BK1U
30 Port RJ45 Unshielded CAT3 19" Patch Panel	Black	LSA-Plus	1U	44.4x483	1/Box	13U03NV030B-BK1U
50 Port RJ45 Unshielded CAT3 19" Patch Panel	Black	110 IDC	1U	44.4x483	1/Box	13U03NV050A-BK1U
50 Port RJ45 Unshielded CAT3 19" Patch Panel	Black	LSA-Plus	1U	44.4x483	1/Box	13U03NV050B-BK1U