

AT&T FiberLine Installation Manual

Fiber Optic SC Rapid Connectors for 250 μ m Tight-buffered Fibers

AT&T P/N 29XFFNV001X-CCXX

For your safety operation

This product is designed and manufactured to assure personal safety. Improper operation can result in injury and in damage to the product. Please read and observe all warnings and follow the instructions detailed in this manual.

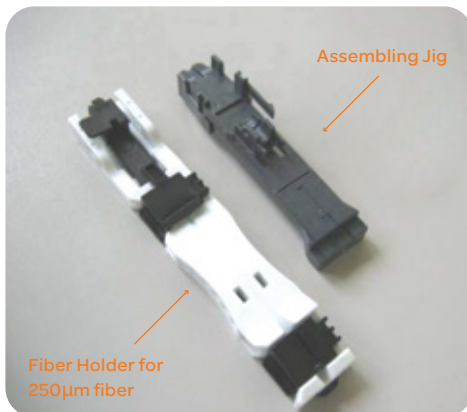
- Wear safety glasses before handling optical fiber to protect the eyes. Small pieces of glass fiber are very sharp and might get into the eyes or under the skin and cause injury.
- Never look into the end of a connector or an optical fiber which may have a laser coupled to it. Laser light may damage your eyes. Please note that laser light is not visible.

Precautions

1. Improper assembly will result in a loss of performance. Please read instructions given in this operation manual.
2. The product is sensitive to dirt or dust. Do not take connector out of the package until it is to be used.
3. The performance will be influenced by the cleaved fiber surface condition. Please use a cleaver that has a good blade.
4. Please insert the fiber into the connector slowly. If the fiber is roughly inserted, it might be damaged or broken, leading to product failure. Broken fiber could be scattered in all directions.
5. Do not remove the dust cap until the connector has been completely assembled.
6. A proper amount of index matching gel is applied in the connector. Do not insert fiber more than once.

Assembly kit

Fiber holder for 250 μ m fiber: 1 Unit.
Assembling Jig: 1 Unit.



Note: Different assembly kits are used for the different connectors and fibers.

Optional assembly tools

1 Fiber cleaver



2 Jacket remover



0.9 to 0.25mm 0.25 to 0.125mm



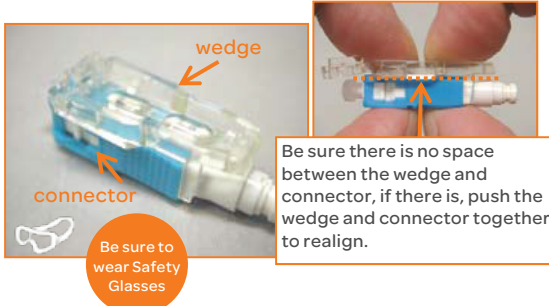
2 Jacket remover

AT&T FiberLine Installation Manual

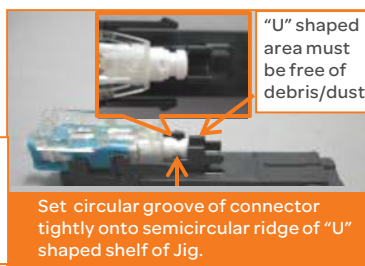
Fiber Optic SC Rapid Connectors for 250µ Tight-buffered Fibers (contd.)

AT&T P/N 29XFFNV001X-CCXX

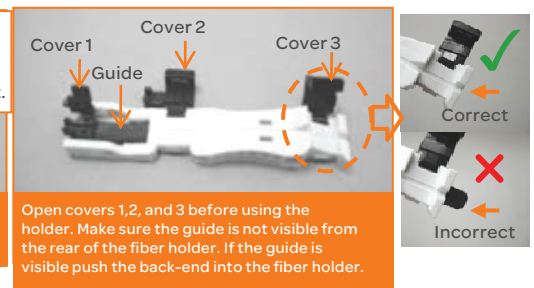
1- Preparing connector



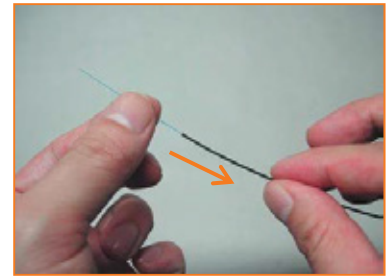
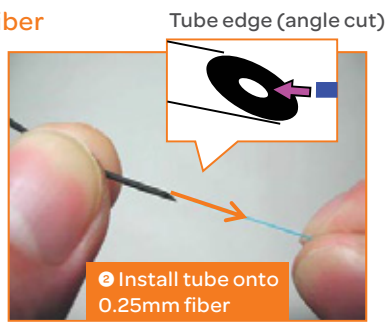
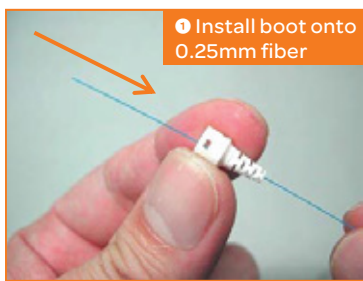
2- Setting connector



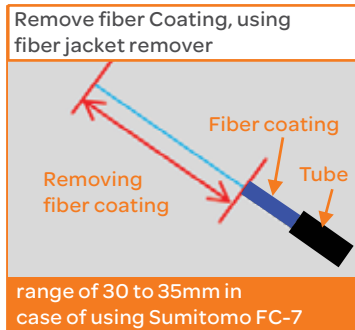
3- Preparing the fiber holder



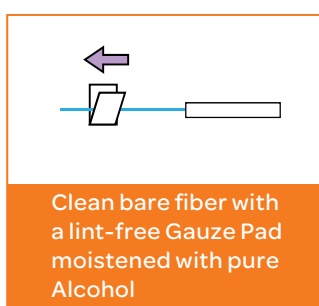
4- Install boot and tube onto 0.25mm fiber



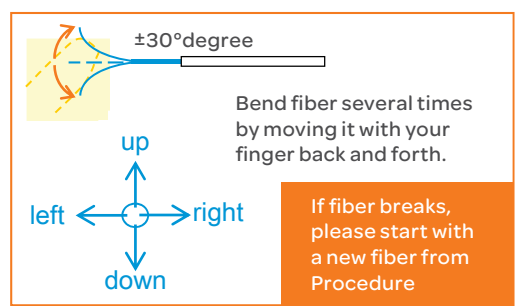
5-Removing fiber coating



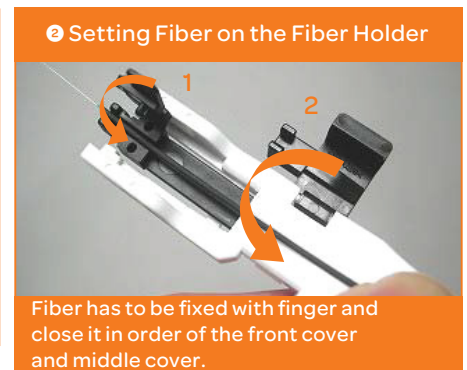
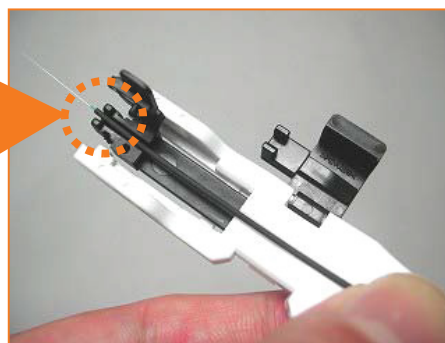
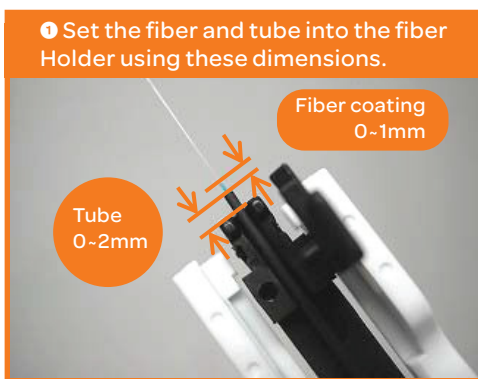
6-Cleaning Bare Fiber



7-Screening Fiber



8-Setting Fiber on the Fiber Holder

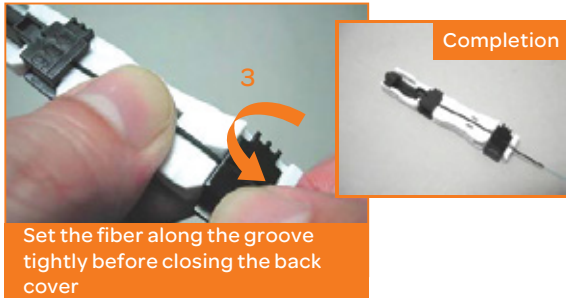


AT&T FiberLine Installation Manual

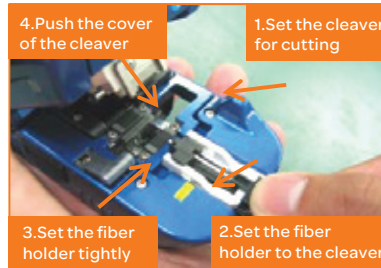
Fiber Optic SC Rapid Connectors for 250 μ Tight-buffered Fibers (contd.)

AT&T P/N 29XFFNV001X-CCXX

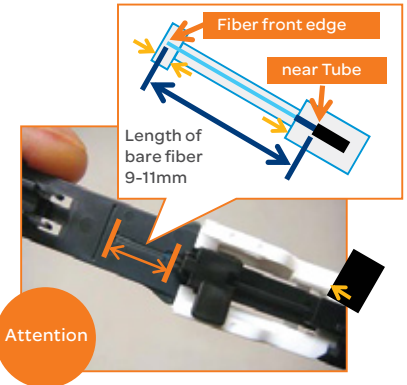
8 Setting Fiber on the Fiber Holder



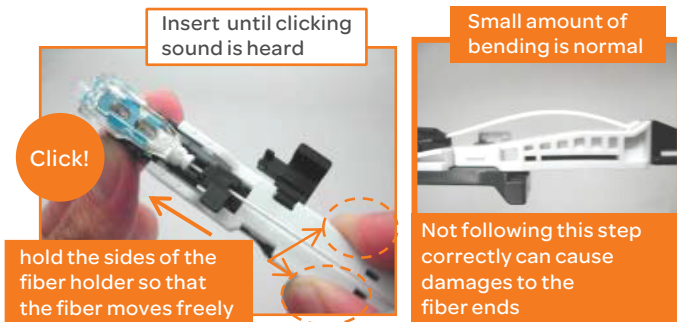
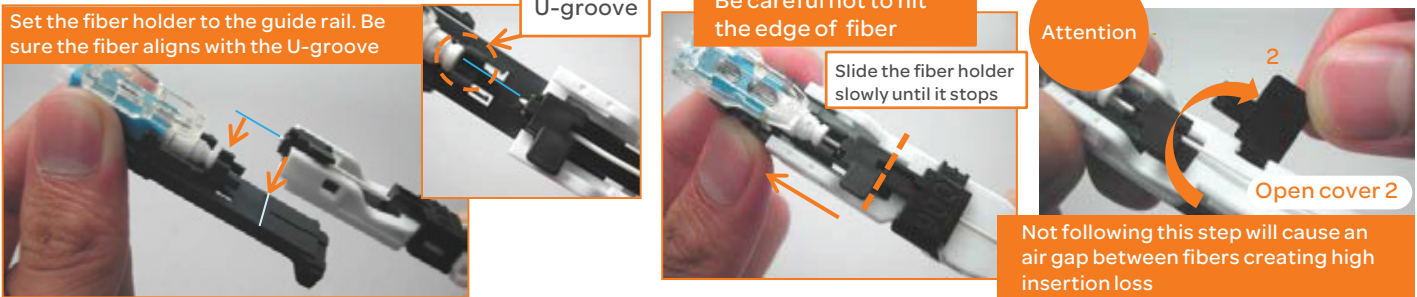
9 -The fiber cleaver



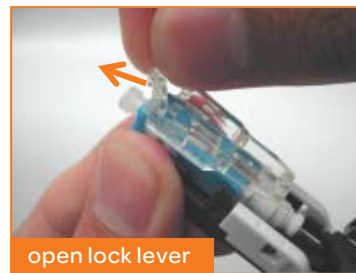
10 -Fiber length check



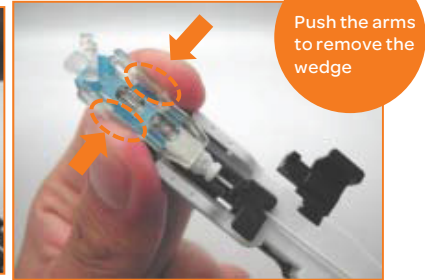
11- Inserting fiber



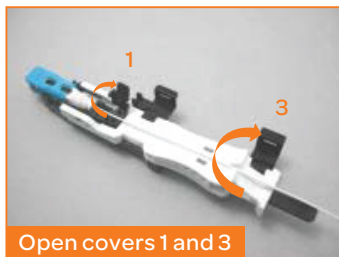
12- Unlock the lever



13- Remove the wedge



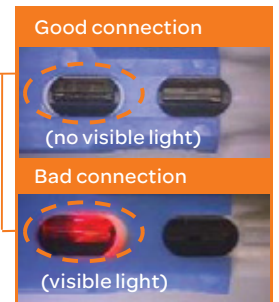
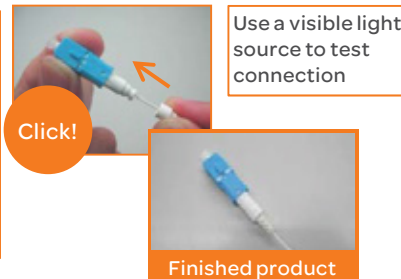
14- Open the cover



15- Remove connector



16- Fitting the boot



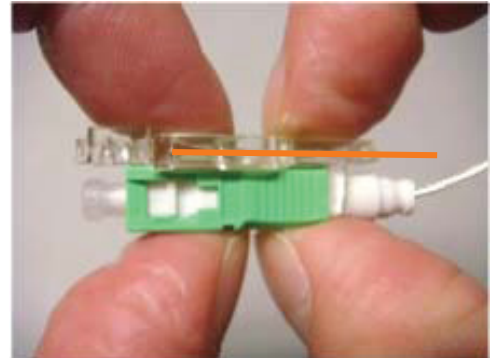
AT&T FiberLine Installation Manual

Fiber Optic SC Rapid Connectors
for 250μ Tight-buffered Fibers (contd.)

AT&T P/N 29XFFNV001X-CCXX

Re-termination instructions

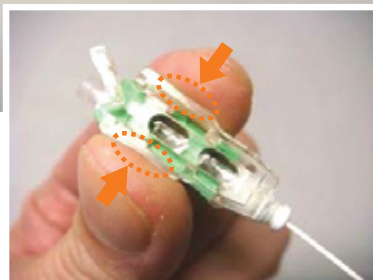
1- Remove the boot and attach the wedge on a connector again (make sure there is no space between the wedge and the connector)



2- Push the inserted fiber and create the bend again
DO NOT PULL FIBER OUT FROM THE CONNECTOR



3- Remove the Wedge



Push the arm to remove the wedge

4- Re-install the boot