

AT&T FiberLine Installation Manual

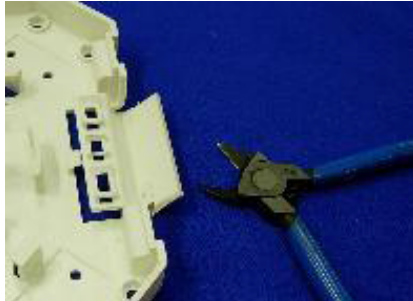
Multimedia Box

AT&T P/N 53M2016012N-WT51

Optical Fiber Cabling



Step 1:
Open the Box.



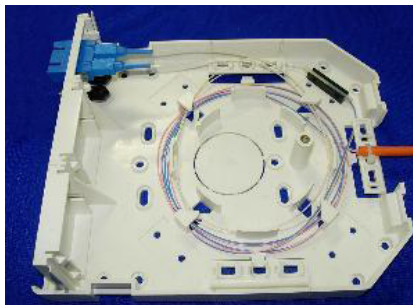
Step 2:
Break off the cable entry
from the cover and from the
back box.



Step 3:
Tie the cable to the box and
wrap the fibers around the center
2~3 times as shown.



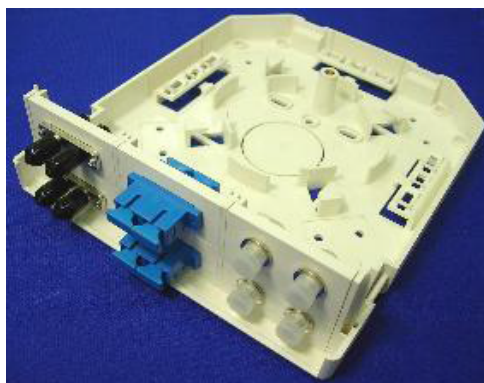
Step 4:
Splice suitable pigtails to the
cable fibers, cover the spliced
section with the protection
sleeve and place it in the
rubber retainer as shown.



Step 5:
Insert the pigtail adapters
into the adapter bezel.



Step 6:
Place back the cover and plug-in
patch cords as needed.



Additional optical fiber bezels including duplex ST, SC, FC & quad LC adapter available upon request.