

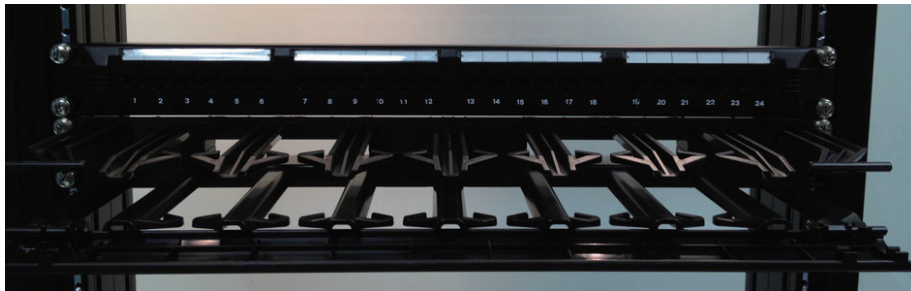
AT&T CopperLine Installation Manual

AT&T CopperLine Accessories
19" Duct Type Cable Management
P/N 521NANN162B-BK1U

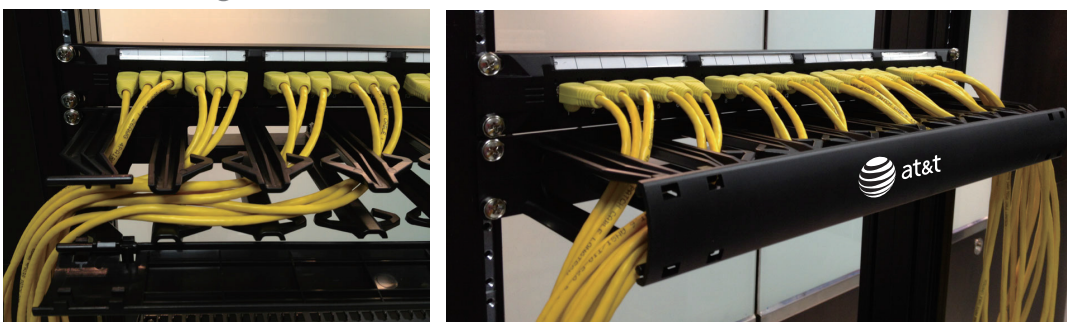
1. Mount the cable management to the desired position on a 19" rack or equivalent.



2. Open the hinged cover.



3. Insert the cords into position, plug them into the panel ports and close the hinged cover.



AT&T Authorized Licensee. AT&T, the AT&T Globe Design and all other AT&T marks contained herein are trademarks of AT&T Intellectual Property and/or AT&T affiliated companies.
Issue 1.1 19/03/2013