

### AT&T CopperLine Installation Manual

#### AT&T CopperLine Accessories

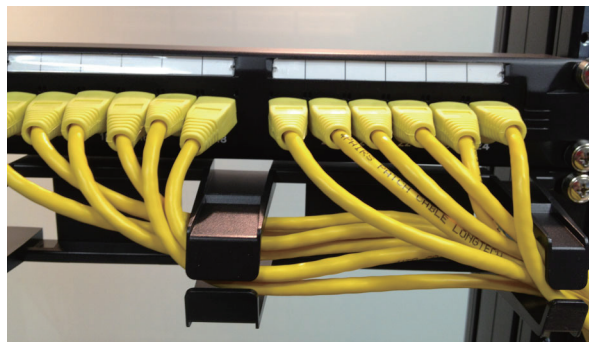
#### 19" Ring Type Cable Management

P/N 521NANN065C-BK1U

1. Mount the cable management to the desired position on a 19" rack or equivalent.



2. First insert each cord into the duct and then plug it into the panel port.



3. Place the cover and lock it firmly.

