

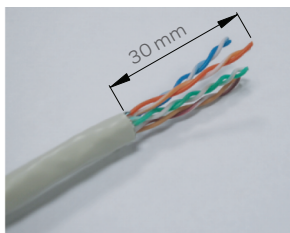
AT&T CopperLine Installation Manual

AT&T CopperLine Category 6A

RJ45 Unshielded Punch-Down Straight Keystone Jacks

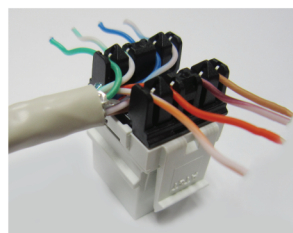
AT&T P/N 15A6ANV008A-WK61

STEP 1:



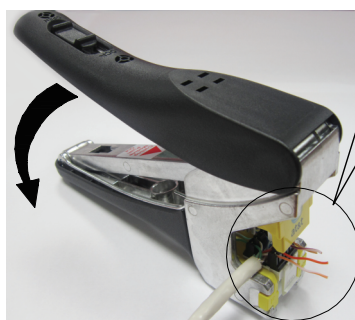
Strip off at least 30mm of jacket from end of cable.

STEP 2:

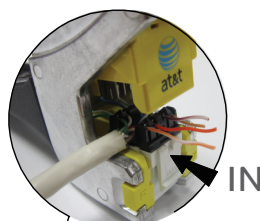


Press the wires through the projecting portion of terminals until fixed.

STEP 3:

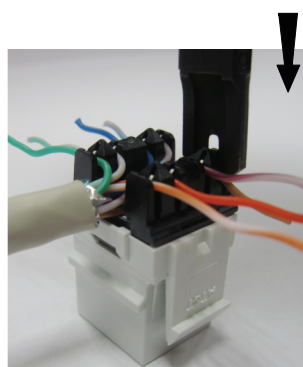


Insert the jack into the guide in either direction.



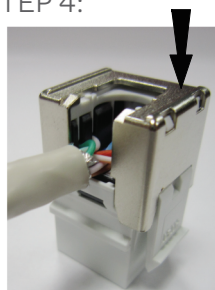
Make sure the jack is firmly placed.

OR

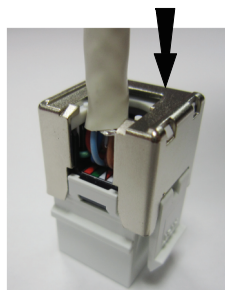


Terminate wires with punch down tool. Make sure the tool cuts off the excess wires.

STEP 4:



OR



Place cap on jack and press to make sure it is fully seated. The cap opening allows the cable to move from side or rear.

AT&T Authorized Licensee. AT&T, the AT&T Globe Design and all other AT&T marks contained herein are trademarks of AT&T Intellectual Property and/or AT&T affiliated companies.

Issue 1.1 12/03/2013