

AT&T CopperLine Installation Manual

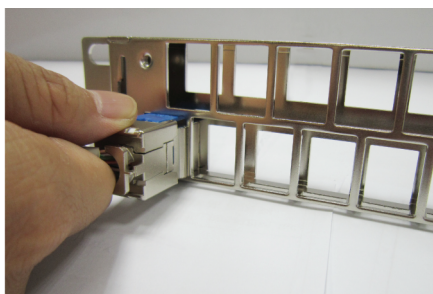
AT&T CopperLine Panels

Snap-in Blank Patch Panels for Straight Jacks

AT&T P/N 13S00NV048C -MT1U

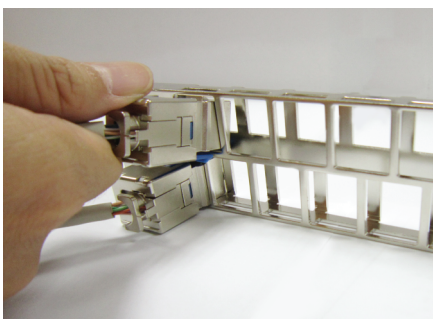
1

Insert keystone jack into the panel lower opening with latch facing up.



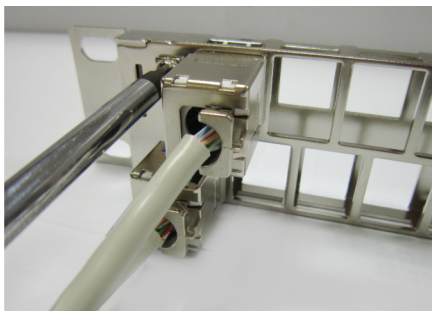
2

Insert keystone jack into the panel upper opening with latch facing down.



3

Screw the drain wire (included) to one of the two grounding lugs on rear of the panel and bond the other side properly to the rack.



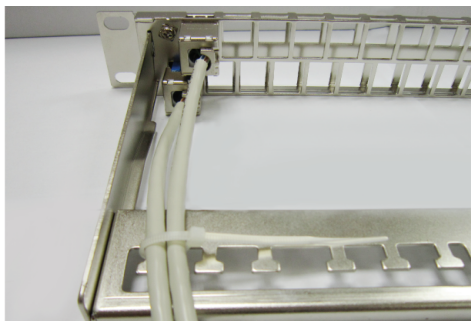
4

Mount the cable management to the rear of panel.



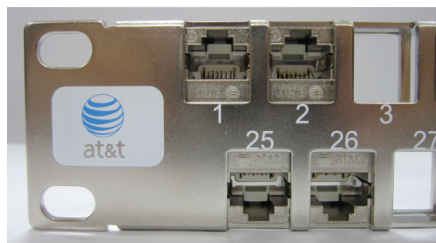
5

Use one cable tie wrapping two cables together to each T-shaped lug on the wire management. Apply minimum force to minimize cable distortion.



Note: All installation is done after the panel is mounted onto the rack.

Front view of the terminated panel.



AT&T Authorized Licensee. AT&T, the AT&T Globe Design and all other AT&T marks contained herein are trademarks of AT&T Intellectual Property and/or AT&T affiliated companies.

Issue 1.1 19/03/2013