

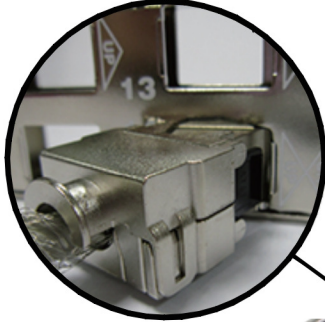
AT&T CopperLine Installation Manual

AT&T CopperLine Panels

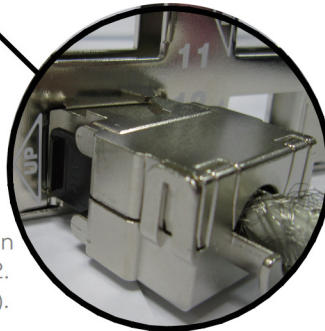
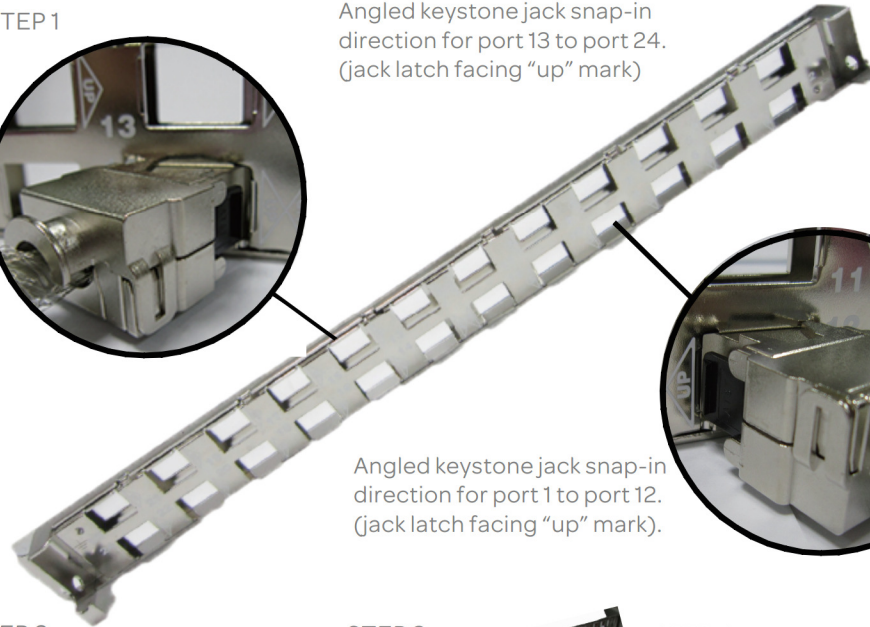
Snap-in Blank 24-Port Shielded Patch Panels for Angled Jacks

AT&T P/N 13S00NV024B-MT1U

STEP 1

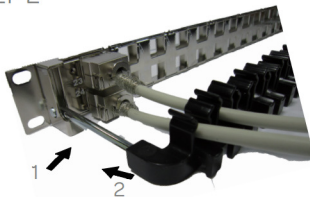


Angled keystone jack snap-in direction for port 13 to port 24. (jack latch facing "up" mark)



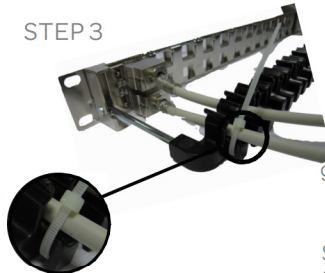
Angled keystone jack snap-in direction for port 1 to port 12. (jack latch facing "up" mark).

STEP 2



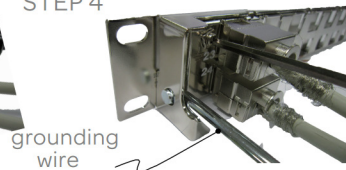
Slightly push the side bar of the cable management and insert it into the hole on the side of patch panel to complete the assembly.

STEP 3

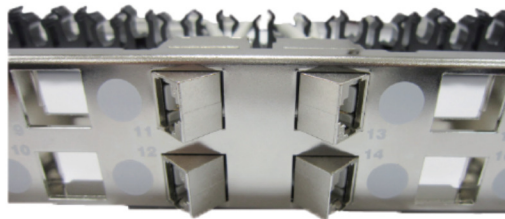


Use a cable tie to fix the cable on the cable management.

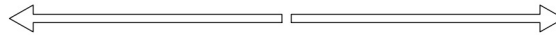
STEP 4



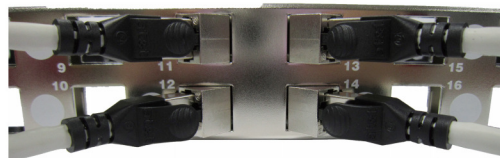
Screw the grounding wire to one of the two grounding plug on rear of panel properly. (GROUNDING WIRE NOT INCLUDED).



Port 1 to port 12 jack openings are facing to the left.



Port 13 to port 24 jack openings are facing to the right.



Port 1 to port 12 ← Patch cords routing → Port 13 to port 24

AT&T Authorized Licensee. AT&T, the AT&T Globe Design and all other AT&T marks contained herein are trademarks of AT&T Intellectual Property and/or AT&T affiliated companies.
Issue 1.1 19/03/2013